

Bloy Street Easton Bristol

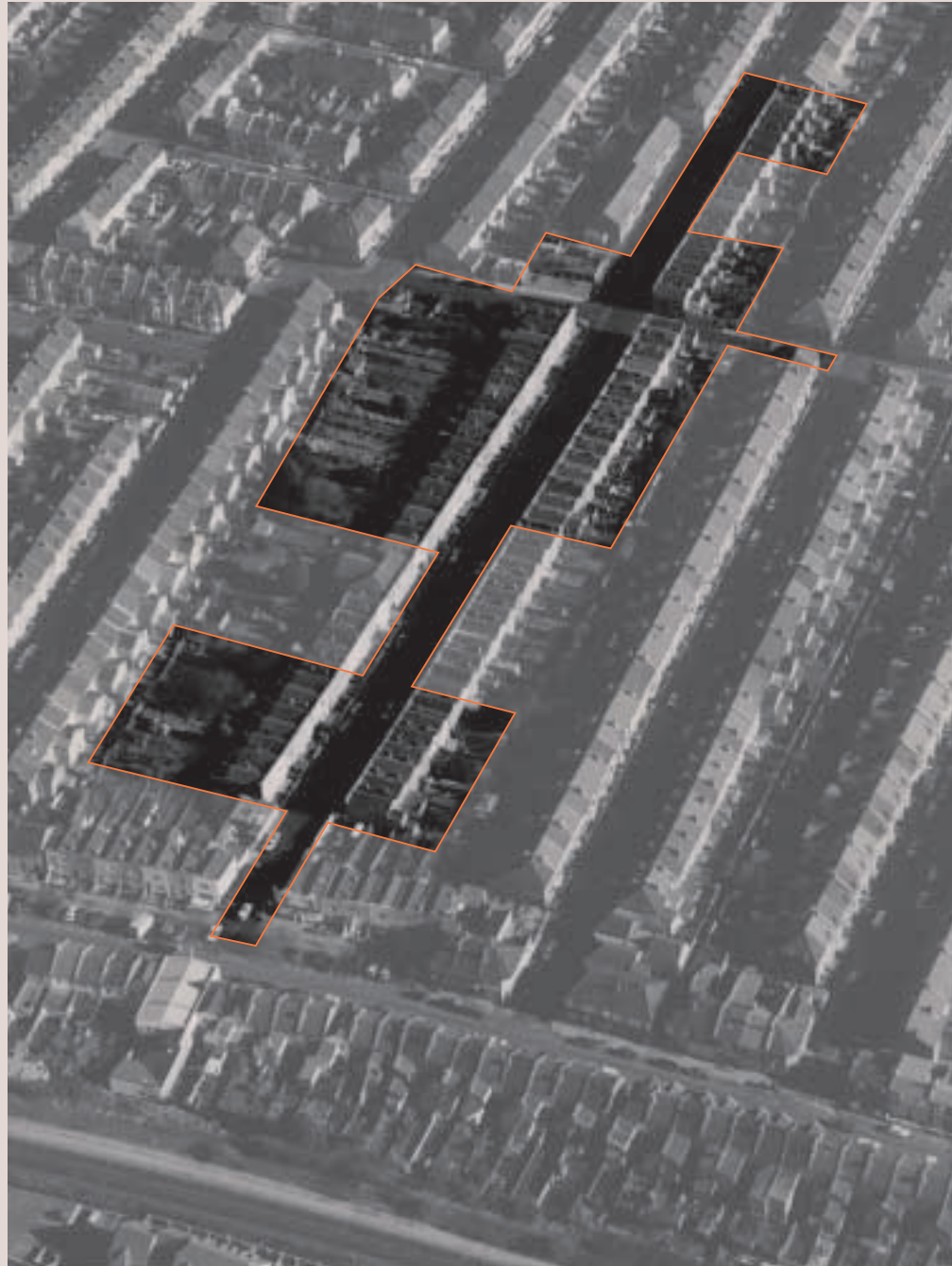
sensitive gradual
renewal of nineteenth
century terraced
housing

Designer
Innes Wilkin
Architecture

Contractor
Beazer Partnership
Homes

Developer
Beazer Partnership
Homes

Planning Authority
Bristol City Council



- 1 Aerial view
- 2 Typical elevation
- 3 Site plan



It is extremely encouraging to see a volume housebuilder tackling with confidence one of the most challenging problems our cities will face in the next few years: the need for sensitive gradual renewal to modern standards of large areas of nineteenth century terraced housing.

The masterplan mixes houses for sale, for rent and for shared ownership, and skilfully exploits the variation in plot depth often found in such areas to introduce a small new square with a corner shop. This simultaneously punctuates the existing street grid with a valuable oasis of greenery and acts as a traffic-calming measure whose beneficial effects should be felt over a much wider area.

